

Barrel (Krieger / Rock Creek/Hart/Shilen)

July 2018 RPS International Inc - Krieger barrel inventory for Canada!

Special orders please email - est. 3 months delivery

**** Prices and inventory subject to change.**

Limited Sale - call to find out about other discounts

ITEM -
select this
one

Ref.	Caliber	Contour (material - stainless steel unless noted otherwise)	Length	Twist	Price
------	---------	---	--------	-------	-------

**SEE CONTOUR / SIZING SPECS. at
end of tables @ bottom**

.17 cal

In stock Lilja rem varmint 9t and Shilen select match 5.5 contour 1-9t - 3 groove - email us.

20

1		20	Rem Varmint 1-9t (special order twist), .830 @ 26" SS	F26/27"	9t	b/o
2		20	Rem Varmint 1-10t, .830 @ 26" SS	F26/27"	10t	b/o
3		20	#5 Contour 1-9t (special twist for heavier bullets) .70Dia" @ 28"	F28/29"	9t	\$ 550.00
4		20	HART 10t, .670" dia @26" Sporter - button barrel like Benchmark	F26/27"	10t	\$ 545.00
5		20	Lilja 12t, Rem Varmint contour button barrel like Benchmark	F26/27"	12t	\$ 545.00

224 CF

1		224 -	#17 contour, SS, .9 dia @ 28"	F28/B29"	1-7.7t	\$ 535.00
2		224 -	#17 contour, SS, .9 dia @ 28"	F28/B29"	1-7t	\$ 535.00
3		224 -	#17 contour, SS, .9 dia @ 28"	F28/B29"	1-12t	\$ 535.00
4		224 -	#17 contour, SS, .9 dia @ 28"	F28/B29"	1-14t	\$ 535.00
5		224 -	#18 contour, SS .875 dia @ 28"	F28/B29"	1-14t	\$ 535.00
6		224 -	#18 contour, SS .875 dia @ 28"	F28/B29"	1-7.7t	\$ 535.00
7		224 -	#18 contour, SS .875 dia @ 28"	F28/B29"	1-7t	\$ 535.00
8		224 -	#16 palma contour, SS,	F28/B29"	1-7t	\$ 535.00
9		224 -	#16 palma contour, SS,	F30/B31"	1-8t	\$ 535.00

ITEM - select this one	Ref.	Caliber	Contour (material - stainless steel unless noted otherwise)	Length	Twist	Price
10		224 -	#16 palma contour, SS,	F28/B29"	1-12t	\$ 535.00
11		224 -	Rem. Varmint - .83" dia muz,	F28/B29"	1-8t	\$ 535.00
12		224 -	Rem. Varmint - .83" dia muz,	F26/B27"	1-8t	\$ 535.00
13		224 -	rem varmint - .830" dia muz	F26/B27"	1-9t	\$ 535.00
14		224 -	rem varmint - .830" dia muz	F28/B29"	1-9t	\$ 535.00
15		224 -	rem varmint - .830" dia muz	F26/B27"	1-10t	\$ 535.00
16		224 -	rem varmint - .830" dia muz - non std twist 1-11t	F26/B27"	1-11t	\$ 555.00
17		224 -	rem varmint - .830" dia muz	F26/B27"	1-12t	\$ 535.00
18		224 -	Rem varmint contour, ss	F26/B27"	1-13t	\$ 535.00
19		224 -	Rem varmint contour, ss	F26/B27"	1-14t	\$ 535.00
20		224 -	#9 contour, SS MTU - straight taper, 1.25"dia beech x 2.75", .875dia muz	F26/B27"	1-12t	\$ 535.00
21		224 -	#8 contour .820" dia Muz	F26/B27"	1-8t	\$ 535.00
22		224 -	#7 contour, SS - straight taper, 1.2dia breech,x2.75", .75dia muz.	F26/B27"	1-8t	\$ 535.00
23		224 -	#7 contour, SS - straight taper, 1.2dia breech,x2.75", .75dia muz.	F26/B27"	1-12t	\$ 535.00
24		224	Shilen match #6 contour	F26/27	14t	\$ 525.00
25		224 -	#5 Sporter contour, SS	F26/B27"	1-12t	\$ 535.00
26		224 -	#5 Sporter contour, SS	F26/B27"	1-10t	\$ 535.00
27		224	Shilen match #5 contour	F26/27	9t	\$ 525.00
28		224 -	MTU (straight taper) - 1.2" X 2.75", .66" MUZZ @ 24" FINISH	24/25	1-9t	\$ 535.00
29		224 -	#4 sporter, .67" dia Muz	F26/B27"	1-8t	\$ 535.00
30		224 -	#4 sporter, .67" dia Muz	F26/B27"	1-14t	\$ 535.00
31		224 -	#3 sporter, .63" dia Muz	F24/B27"	1-8t	\$ 535.00

6mm

1		6 MM	Rock Creek Cut rifled 5R, ss 1.35" for 5" taper to 1.1" at 30"	F30/B31"	1-8t	\$ 675.00
2		6 MM	Hart, ss 1.35" for 5" taper to 1.1" at 30"	F30/B31"	1-8t	\$ 645.00
3		6 MM	#17 Special - SS, 1-8t, 1.25" for 5", taper to 1" @ 30"	F30/B31"	1-8t	\$ 575.00
4		6 MM	#17 Special - SS, 1-8t, 1.25" for 5", taper to 1" @ 30" - 5R rifling	F30/B31"	1-8t	\$ 595.00
5		6 MM	#17 Special length - SS, 1.25" for 5", taper to 0.9" @ 30"	F30/B31"	1-8t	\$ 575.00

ITEM - select this one	Ref.	Caliber	Contour (material - stainless steel unless noted otherwise)	Length	Twist	Price
6		6 MM	#17 Special length - SS,1.25" for 5", taper to 0.9" @ 30" - 5R rifling.	F30/B31"	1-8t	\$ 595.00
7		6 MM	#17 Special length - SS,1.25" for 5", taper to 0.9" @ 30"	F30/B31"	1-7t	\$ 575.00
8		6 MM	#17 Special length - SS,1.25" for 5", taper to 0.9" @ 30" - 5R	F30/B31"	1-7.5t	\$ 595.00
9		6 MM	#17 mtu contour, SS, finish .9 dia. @ 28"	F28/B29"	1-14t	\$ 535.00
10		6 MM	mtu contour 1.2x5" - .9@26", SS, 27" blank"	F26/B27"	1-14t	\$ 535.00
11		6 MM	#17 mtu contour, SS, finish .9 dia. @ 28"	F28/B29"	1-13.5t	\$ 535.00
12		6 MM	#17 mtu contour, SS, finish .9 dia. @ 28" - 5R rifling	F28/B29"	1-13.5t	\$ 565.00
13		6 MM	#17 1.25" for 5, finish .9 dia. @ 28" - 5R rifling	F28/B29"	1-8t	\$ 565.00
14		6 MM	#17 special contour - SS - .9" dia. @28"	F28/B29"	1-8t	\$ 535.00
15		6MM	#17 mtu 1.25 for 5", .9 @28"	F28/B29"	1-7.5t	\$ 535.00
16		6MM	#17 mtu 1.25 for 5", .9 @28"	F28/B29"	1-7t	\$ 535.00
17		6 MM	#17 contour - SS, .9 muz- Special 5r rifling	F28/B29"	1-8t	\$ 575.00
18		6 MM	#18, .875 dia muz.	F28/B29"	1-14t	\$ 535.00
19		6 MM	#18, .875 dia muz.	F28/B29"	1-13.5t	\$ 535.00
20		6 MM	#18, .875 dia muz.	F28/B29"	1-8t	\$ 535.00
21		6 MM	Target contour MTU - 1.2" dia for 2.75", .855 dia muz. Regular \$450	F28/B29"	1-8t	\$ 535.00
22		6 MM	Target contour MTU - 1.2" dia for 2.75", .875 dia muz.	F28/B29"	1-8t	\$ 535.00
23		6 MM	M24/M40 (MTU) - 5R rifling	F28/B29"	1-8t	\$ 575.00
24		6 MM	Rock Creek - M24/M40 (MTU) - 5R rifling	F28/B29"	1-8t	\$ 595.00
25		6 MM	M24/M40 (MTU) - 5R rifling	F28/B29"	1-7.5t	\$ 575.00
26		6 MM	Rock Creek - M24/M40 (MTU) - 5R rifling	F28/B29"	1-7.5t	\$ 595.00
27		6 MM	M24/M40 (MTU) - 5R rifling	F28/B29"	1-7t	\$ 575.00
28		6 MM	Rock Creek - M24/M40 (MTU) - 5R rifling	F28/B29"	1-7t	\$ 595.00
29		6 MM	Rem Varmint contour, SS, .830" @ 28"	F28/B29"	1-8t	\$ 535.00
30		6 MM	rem var mod, 1.25 for 2.2", .83" @ muz.	F28/B29"	1-7.5t	\$ 550.00
31		6 MM	rem var mod, 1.25 for 2.2", .83" @ muz. - 5R	F28/B29"	1-7.5t	\$ 575.00
32		6 MM	rem var mod, 1.25 for 2.2", .83" @ muz. - 5R	F28/B29"	1-7t	\$ 575.00

ITEM - select this one	Ref.	Caliber	Contour (material - stainless steel unless noted otherwise)	Length	Twist	Price
33		6 MM	#16 palma (light) contour, SS,	F28/B29"	1-8t	\$ 535.00
34		6 MM	#16 palma (light) contour, SS, special 5R rifling	F30/B31"	1-8t	\$ 595.00
35		6 MM	#16 palma (light) contour, SS,	F30/B31"	1-9t	\$ 550.00
36		6 MM	#15 Med palma contour, SS,	F30/B31"	1-8t	\$ 550.00
37		6 MM	#15 Med palma contour, SS, special 5R rifling	F30/B31"	1-8t	\$ 595.00
38		6 MM	#14 Heavy palma contour, SS, special 5R rifling	F30/B31"	1-8t	\$ 595.00
39		6MM	#6 Sporter contour, 1.25" dia.- 2.75", .75' dia @ muzzle (extended normally fin. 26")	F28/B29"	1-8t	\$ 535.00
40		6 MM	#5 contour, 1.25" for 2.75", .7 muzz.	F28/B29"	1-8t	\$ 535.00
41		6 MM	#5 contour, 5R RIFLING, SS, 1.25" for 2.75", .7 muzz. @ 26"	F26/B27"	1-8t	\$ 575.00
42		6 MM	#4 sporter contour, 5R RIFLING, SS, .670 dia. @ muz.	F26/B27"	1-8t	\$ 575.00
43		6 MM	#4 sporter contour, ss .670 dia muz.	F28/B29"	1-8t	\$ 535.00
44		6 MM	#4 contour - SS - .670" dia @ muzzle special twist	F26/B27"	1-7t	\$ 535.00
45		6 MM	Hart - #3 sporter contour, ss,	F26/B27"	1-8t	\$ 565.00
46		6 MM	Shilen Select Match - #3 sporter contour, ss,	F26/B27"	1-8t	\$ 565.00
46		6 MM	#3 sporter contour, SS,	F24/B27"	1-10t	\$ 535.00
47		6 MM	#3, sporter .630 dia muz.	F24/B27"	1-8t	\$ 535.00
48		6 MM	Sporter, 1.25" dia for 2.25", .560" dia muzzle @ 26", - CRO MO	F26/27	1-8t	\$ 535.00

We have light contours from Hart and Shilen in stock - call or email.

6.5 mm

1		6.5 MM	#17A MTU, 1.25"for 5", FIN 30", .9 MUZ. CROWN - 5R rifling weight ~3575 gms	F30/F31	1-8T	\$ 595.00
2		6.5 MM	#17A MTU, 1.25"for 5", FIN 30", .9 MUZ. CROWN	F30/F31	1-8T	\$ 555.00
3		6.5 MM	#17B MTU, 1.25"for 5", FIN 30", 1 MUZ. CROWN - 5R rifling weight ~3875 gms	F30/F31	1-8T	\$ 595.00
4		6.5 MM	#17B MTU, 1.25"for 5", FIN 30", 1 MUZ. CROWN	F30/F31	1-8T	\$ 555.00

ITEM - select this one	Ref.	Caliber	Contour (material - stainless steel unless noted otherwise)	Length	Twist	Price	
5		6.5 MM	#17B MTU, 1.25"for 5", FIN 30", 1 MUZ. CROWN 5R rifling	f28/29	1-8T	\$ 595.00	
6		6.5 MM	#17 MTU, 1-8T, FIN 28", .9 MUZ. CROWN	F28/B29"	1-8T	\$ 535.00	
7		6.5 MM	#17 MTU, 1-8T, FIN 28", .9 MUZ. CROWN 5R rifling	F28/B29"	1-8T	\$ 565.00	
7		6.5 MM	#18 MTU, 1-8T, FIN 30", .875 MUZ. CROWN	F30/B31"	1-8T	\$ 535.00	
8		6.5 MM	#18 MTU, 1-8T, FIN 30", .875 MUZ. CROWN	F30/B31"	1-8T	\$ 535.00	
9		6.5 MM	#18 target contour, .875@ muzz @ 28" SS,	F28/B29"	1-8.5t	\$ 535.00	
10		6.5 MM	#18 target contour, .875@ muzz @ 28" SS,	F28/B29"	1-8t	\$ 535.00	
11		6.5 MM	#18 target contour, .875@ muzz @ 28" SS, 5R rifling	F28/B29"	1-8t	\$ 575.00	
12		6.5 MM	#16 palma light contour (good long range hunting contour), .75" @ 30", SS,	F30/B31"	1-8t	\$ 555.00	
		6.5 mm	#16 palma light - 0.750" muz.	F28/29	8t	\$ 545.00	
13		6.5 MM	#14 palma contour (good long range hunting contour), .9" @ 30", SS, 5R rifling	F30/B31"	1-8t	\$ 585.00	
		6.5 mm	#14 palma light - 0.90" muz.	F28/29	8t	\$ 545.00	
14		6.5 MM	#15 palma med .820" muz. @ 30", SS,	F30/B31"	1-8t	\$ 585.00	
		6.5 mm	#15 palma light - 0.820" muz.	F28/29	8t	\$ 545.00	
ROCK CREEK 15		6.5mm	Rock Creek Brand , ss, cut rifled, M24/M40 Contour - 5R rifling.	F26/27	1-8t	\$ 595.00	
ROCK CREEK 16		6.5mm	Rock Creek Brand , ss, cut rifled, M24/M40 Contour - 5R rifling.	F28/29	1-8t	\$ 595.00	
17		6.5mm	Krieger Brand , ss, cut rifled, M24/M40 (MTU) - 5R rifling,	F28/29	1-8t	\$ 585.00	
18		6.5mm	Rock Creek Brand , ss, cut rifled, Rem. Varmint Contour - 5R rifling.	F26/27	1-8t	\$ 595.00	
19		6.5mm	Rock Creek Brand , ss, cut rifled, Rem. Varmint Contour - 5R rifling.	F28/29	1-8t	\$ 595.00	
20		6.5mm	Hart , ss, Rem. Varmint Contour -	F26/27	8t	\$ 545.00	
21		6.5MM	Rem Varmint contour, long, ss	F28/B29"	1-8t	\$ 535.00	
22		6.5MM	Rem Varmint contour, long, ss	F28/B29"	1-8.5t	\$ 535.00	

ITEM - select this one	Ref.	Caliber	Contour (material - stainless steel unless noted otherwise)	Length	Twist	Price	
23		6.5MM	Rem Varmint contour, long, ss	F28/B29"	1-8.25t	\$ 535.00	
24		6.5MM	Rem Varmint contour, long, ss	F28/B29"	1-9t	\$ 535.00	
25		6.5MM	#10 mtu contour, ss,	F26/B27"	1-8t	\$ 535.00	
26		6.5 MM	#9 mtu contour, SS,	F26/B27"	1-8t	\$ 535.00	
27		6.5 MM	#8 mtu contour, SS,	F26/B27"	1-8t	\$ 535.00	
28		6.5 MM	#7 CONTOUR, FIN. 26", .75" DIA MUZ., ss	F26/B27"	1-8T	\$ 535.00	
29		6.5 MM	#6 CONTOUR, FIN. 26" , .75" DIA MUZ., ss	F26/B27"	1-8T	\$ 535.00	
30		6.5 MM	#5 Sporter, 5R RIFLING , Fin. .70" dia. @ 28", ss,	F28/B29"	8t	\$ 585.00	
31		6.5 MM	#5 Sporter, Fin. .70" dia. @ 28", ss, extended length	F28/B29"	8t	\$ 535.00	
32		6.5 MM	#5 Sporter, Fin. .70" dia. @ 28", ss,	F28/B29"	8.5t	\$ 535.00	
33		6.5 MM	#4.5 sporter, Fin. .67" Dia. @ 26", SS	F26/B27"	1-8t	\$ 535.00	
34		6.5 MM	#4.5 sporter, Fin. .67" Dia. @ 26", SS	F26/B27"	1-8.5t	\$ 535.00	
35		6.5mm	#4 Krieger contour (1.25dia for 2.75", finish .670 @ 26") - ROCK Creek 5R rifling	F26/27"	8t	\$585	
36		6.5mm	#4 ROCK Cr. contour (1.20 dia for 3", finish .650 @ 26") - ROCK Creek 5R rifling	F26/27"	8t	\$585	
37		6.5 MM	#4 sporter, match SS, Fin .670 dia @ 26",	F26/B27"	1-8t	\$ 535.00	
38		6.5 MM	#4 sporter, match SS, Fin .670 dia @ 26", 5R Rifling	F26/B27"	1-8t	\$ 585.00	
39		6.5 MM	#4 sporter, match SS, Fin .670 dia @ 26",	F26/B27"	8.5t	\$ 550.00	
40		6.5 MM	#4 sporter, match cro moly , .670 dia	F26/B27"	1-8t	\$ 535.00	
41		6.5 MM	#3 sporter, match cro moly , .630 dia	F24/B27"	1-8t	\$ 535.00	
42		6.5mm	#3 contour - ROCK Creek 5R rifling, fluted will finish 24"	F26/27"	8t	\$595	
43		6.5 MM	HART #3 sporter, match STAINLESS, .630 dia	F26/B27"	1-8t	\$ 550.00	
44		6.5 MM	HART #3 sporter FLUTED, match STAINLESS, .630 dia	F26/B27"	1-8t	\$ 695.00	
45		6.5 MM	HART #2 sporter, match STAINLESS, .630 dia	F26/B27"	1-8t	\$ 550.00	
46		6.5 MM	sporter, 1.17" DIA X 2.75", .83" DIA @ 26", SS (Perfect for lightweight or T3 tikka	F26/B27"	1-9t	\$ 535.00	

ITEM - select this one	Ref.	Caliber	Contour (material - stainless steel unless noted otherwise)	Length	Twist	Price	
7 mm							
call or email for sale prices on random barrels							
1		7 MM	Rock Creek cut rifled. 5R, ss 1.35" for 5" taper to 1.1" at 30"	F30/B31"	1-8t	\$ 675.00	
2		7 MM	Hart, ss 1.35" for 5" taper to 1.1" at 30"	F30/B31"	1-8t	\$ 645.00	
3		7 MM	1.25 for 32", SPECIAL LENGTH - #11 MTU	F32/B33"	1-8t	\$ 630.00	
3		7 MM	1.25 for 32", SPEC. LENGTH - 5R rifling #11 MTU	F32/B33"	1-8.5t	\$ 630.00	
3		7 MM	1.25 for 30", SPEC. LENGTH- 5R rifling #11 MTU	F30/B31"	1-8.5t	\$ 630.00	
4		7 MM	1.25 for 32", SPECIAL LENGTH - #11 MTU	F32/B33"	1-9t	\$ 600.00	
5		7 MM	#17 Mtu, 1.25 for 5", 0.9@ muz - SPECIAL LENGTH	F31/B32"	1-8t	\$ 585.00	
6		7 MM	#17 Mtu, 1.25 for 5", 0.9@ muz - SPECIAL LENGTH	F31/B32"	1-8.5t	\$ 585.00	
7		7 MM	#17 Mtu special 5R, 1.25 for 5", 0.9@ muz	F30/B31"	1-8.5t	\$ 610.00	
8		7 MM	#17 Mtu special 5R, 1.25 for 5", 0.9@ muz	F30/B31"	1-8t	\$ 610.00	
9		7 MM	#17 Mtu, 1.25 for 5", 0.9@ muz - SPECIAL LENGTH	F30/B31"	1-8t	\$ 585.00	
10		7 MM	#17 Mtu, 1.25 for 5", 0.9@ muz - SPECIAL LENGTH ss	F30/B31"	1-8.5t	\$ 585.00	
11		7 MM	#17 special contour MTU - 1- 8.5t, FIN 30", 1" DIA MUZ., ss	F30/B31"	1-8.5T	\$ 585.00	~8lb - 7oz @ 31+ "
12		7 MM	#17 Mtu, 1.25 for 5", 0.9@ muz., ss	F30/B31"	1-9t	\$ 585.00	
13		7 MM	#17 Mtu, 1.25 for 5", 0.9@ muz., ss	F28/B29"	1-8.5t	\$ 535.00	
14		7 MM	#17 Mtu, 1.25 for 5", 0.9@ muz., ss	F28/B29"	1-8t	\$ 535.00	
15		7 MM	Target contour, 1.25" for 2.75" (breech) taper to 0.930" @28"	F28/B29"	8.5t	\$ 535.00	
17		7 MM	#18 Mtu special 5R, 1.2 for 5", 0.875@ muz. Ss	F30/B31"	1-8.5t	\$ 595.00	
18		7 MM	#18 Mtu special length, 1.2 for 5", 0.875@ muz. Ss	F30/B31"	1-8t	\$ 565.00	
19		7 MM	#18 Mtu special length, 1.2 for 5", 0.875@ muz, ss	F30/B31"	1-8.5t	\$ 565.00	
20		7 MM	#18 Mtu special length, 1.2 for 5", 0.875@ muz., ss	F30/B31"	1-8.75t	\$ 565.00	
21		7 MM	#18 contour, 1.2 for 5" , .875 muz., ss	F28/B29"	1-8.5t	\$ 535.00	

ITEM - select this one	Ref.	Caliber	Contour (material - stainless steel unless noted otherwise)	Length	Twist	Price	
22		7 MM	#18 contour, 1.2 for 5" , .875 muz., ss	F28/B29"	1-8t	\$ 535.00	
23		7 MM	#16 light palma, 1.25for 2.5, .75@muz., ss	F30/B31"	1-8t	\$ 565.00	
24		7 MM	#16 palma light contour, SS,	F30/B31"	1-8.5t	\$ 550.00	
25		7 MM	#16 palma light contour, SS,	F30/B31"	1-9t	\$ 550.00	
26		7 MM	Rem Varmint contour special length, SS, SPECIAL 5R rifling 28" finish. .830 dia	F28/B29"	1-8t	\$ 555.00	
27		7 MM	Rem Varmint contour special length, SS .830 dia	F28/B29"	1-8t	\$ 535.00	
28		7MM	REM VAR. SPORTER - SPECIAL LENGTH ,ss	F28/B29"	1-8.5t	\$ 535.00	
29		7MM	REM VAR. SPORTER - SPECIAL LENGTH , ss	F28/B29"	1-8.75t	\$ 535.00	
30		7MM	REM VAR. SPORTER - , ss	F26/B27"	1-8.5t	\$ 535.00	
31		7MM	REM VAR. SPORTER - , ss	F26/B27"	1-8t	\$ 535.00	
32		7 MM	Rem Varmint contour, SPECIAL LENGTH, SS,	F28/B29"	1-9t	\$ 535.00	
33		7 MM	Rem Varmint contour special length, SS, SPECIAL 5R rifling 28" finish. .830 dia	F28/B29"	1-9t	\$ 575.00	
34		7MM	REM VAR. SPORTER - 1.25X2.2, .83DIA @ 26" , ss	F26/B27"	1-9T	\$ 535.00	
35		7 MM	#7 CONTOUR - 1-9T, 26" FIN. .75 DIA MUZ., ss	F26/B27"	1-9T	\$ 535.00	
36		7 MM	#6 Heavy bull sporter, .75M., ss	F26/B27"	1-8t	\$ 535.00	
37		7 MM	#6 Heavy bull sporter, .75M., ss - 2" longer	F28/B29"	1-8.75t	\$ 535.00	
38		7 MM	#6 CONTOUR, 26" FIN. .75 DIA MUZ., ss	F26/B27"	1-9T	\$ 535.00	
39		7 MM	#5 CONTOUR, 26" FIN. .7 DIA MUZ., ss	F26/B27"	1-8T	\$ 535.00	
40		7 MM	#5 CONTOUR, 26" FIN. .7 DIA MUZ., ss	F26/B27"	1-8.5T	\$ 535.00	
41		7 MM	#5 CONTOUR, 26" FIN. .7 DIA MUZ., ss	F26/B27"	1-9T	\$ 535.00	
42		7 MM	#5 CONTOUR, FIN. .7 DIA @ 28" MUZ., ss - 2" longer	F28/B29"	8t	\$ 535.00	
43		7 MM	#5 CONTOUR, FIN. .7 DIA @ 28" MUZ., ss - 2" longer	F28/B29"	8.5t	\$ 535.00	
44		7 MM	#5 CONTOUR, FIN. .7 DIA @ 28" MUZ., ss - 2" longer	F28/B29"	9t	\$ 535.00	
45		7 MM	#4.5 sporter, SS , .670" dia @ 28" finish (2" longer finish)	F28/B29"	1-8t	\$ 535.00	

ITEM - select this one	Ref.	Caliber	Contour (material - stainless steel unless noted otherwise)	Length	Twist	Price	
46		7 MM	#4.5 sporter, 5R RIFLING, SS , .670" dia @ 28" finish (2" longer finish)	F28/B29"	8T	\$ 585.00	
47		7 MM	#4.5 sporter, SS , .670" dia @ 28" finish (2" longer finish)	F28/B29"	1-8.5t	\$ 535.00	
48		7 MM	#4.5 sporter, 5R RIFLING, SS , .670" dia @ 28" finish (2" longer finish)	F28/B29"	8.5T	\$ 595.00	
49		7 MM	#4.5 sporter, SS , .670" dia @ 28" finish (2" longer finish)	F28/B29"	8.75t	\$ 535.00	
50		7 MM	#4.5 sporter, 5R RIFLING, SS , .670" dia @ 28" finish (2" longer finish)	F28/B29"	9T	\$ 585.00	
51	SALE	7 MM	#4.5 sporter, SS 1-8t, 26" finish, .670 dia Reg \$555	F26/B27"	1-8t	\$ 510.00	
52		7 MM	#4.5 sporter, SS 1-8.5t, 26" finish, .670 dia	F26/B27"	1-8.5t	\$ 535.00	
53		7 MM	#4.5 sporter, SS, 1-9t, 26" finish, .670 dia - extended length	F28/B29"	1-9t	\$ 535.00	
54		7 MM	#4.5 sporter, SS, 1-9t, 26" finish, .670 dia	F26/B27"	1-9t	\$ 535.00	
55		7MM	#4 sporter, SS, 1-8.3t, 26" finish, .670 dia, 5R rifling, Rock Creek cut rifled.	F26/27"	8.3T	\$ 585.00	
if you need lighter controls call us about Hart and Shilen Select match stainless #3 and #2 contours							
56		7 MM	#4 sporter, match cro moly, 26" finish, .670 dia	F26/B27"	1-8.5t	\$ 535.00	
57		7 MM	#4 sporter, match cro moly, 26" finish, .670 dia	F26/B27"	1-9t	\$ 535.00	
58		7 MM	Hart #3 sporter, match ss, 26" finish , .630 dia	F26/B27"	1-9t	\$ 555.00	
58		7 MM	Hart #3 sporter, match ss, 26" finish , .630 dia	F26/B27"	1-8t	\$ 555.00	
58		7 MM	#3 sporter, match cro moly, 26" finish , .630 dia	F26/B27"	1-9t	\$ 535.00	
59		7 MM	#2 sporter, match cro moly, 26" finish , .600 dia	F26/B27"	1-9t	\$ 535.00	
We have light contours from Hart and Shilen in stock - call or email.							
308							
							limited
1		308	#11 mtu - 1.25" cylindrical - 5R rifling	F32/33	9T	\$ 635.00	
2		308	#11 mtu - 1.25" cylindrical - 5R rifling	F32/33	8T	\$ 635.00	

ITEM - select this one	Ref.	Caliber	Contour (material - stainless steel unless noted otherwise)	Length	Twist	Price	
3		308	#11 mtu - 1.25" cylindrical - 5R rifling	F30/33	9T	\$ 635.00	
4		308	#11 mtu - 1.25" cylindrical - 5R rifling	F30/33	8T	\$ 625.00	
5		308	#17 special length/contour, 30" FIN. , .9" DIA @ MUZ.	F30/B31"	8T	\$ 570.00	
6		308	#17 special length/contour, 30" FIN. , .9" DIA @ MUZ. 5R	F30/B31"	8T	\$ 595.00	
7		308	#17 special length/contour, 30" FIN. , .9" DIA @ MUZ.	F30/B31"	9T	\$ 570.00	
8		308	#17 special length/contour, 30" FIN. , .9" DIA @ MUZ. 5r rifling	F30/B31"	9T	\$ 620.00	
9		308	#17 special length/contour, 30" FIN. , 1" DIA @ MUZ.	F30/B31"	1-10t	\$ 570.00	
10		308	#17 special length/contour, 30" FIN. , 1" DIA @ MUZ. , SS, SPECIAL 5R RIFLING.	F30/B31"	1-10t	\$ 570.00	
11	SALE	308	#17 special length/contour, 30" FIN. , 1" DIA @ MUZ. REG \$575	F30/B31"	1-12t	\$ 535.00	
12	SALE	308	#17 special length/contour, 30" FIN. , 1" DIA @ MUZ. , SS, SPECIAL 5R RIFLING, Reg \$605	F30/B31"	1-12t	\$ 565.00	
13		308	#17 special length/contour, 30" FIN. , 1" DIA @ MUZ. , SS, SPECIAL	F30/B31"	1-11.25t	\$ 585.00	
14		308	#17 , 0.9" DIA @ MUZ. , SS, 5r rifling	28/29	9t	\$ 585.00	
15		308	#17 special contour, 1" DIA @ MUZ. 28" , SS, SPECIAL	F28/B29"	1-11.25t	\$ 535.00	
16		308	#17 special contour, 1" DIA @ MUZ. 28" , SS, SPECIAL 5R RIFLING.	F28/B29"	1-10t	\$ 590.00	
17		308	#17 CONT., 28" FIN., .9" @ MUZ., SS	F28/B29"	1-11.25t	\$ 535.00	
18		308	#17 CONT., 28" FIN., .9" @ MUZ., SPECIAL 5R RIFLING, SS	F28/B29"	11.25T	\$ 585.00	
19		308	#17 CONT., 28" FIN., .9" @ MUZ. SS	F28/B29"	10T	\$ 535.00	
20		308	#17 CONT., 28" FIN., .9" @ MUZ., SPECIAL 5R RIFLING, SS	F28/B29"	10T	\$ 585.00	
21		308	#17 CONT., 28" FIN., .9" @ MUZ., SPECIAL 5R RIFLING, SS	F28/B29"	8T	\$ 585.00	

ITEM - select this one	Ref.	Caliber	Contour (material - stainless steel unless noted otherwise)	Length	Twist	Price	
22		308	#18 CONT., 28" 0.875" @ MUZ., ss	F30/B31"	1-11.25t	\$ 535.00	
23		308	#18 CONT., 28" 0.875" @ MUZ., ss SPECIAL 5R RIFLING.	F28/B29"	1-11.25t	\$ 565.00	
24		308	M24 contour, extended MTU ss .9" @ 28"- ss	F28/B29"	9T	\$ 555.00	
25		308	M24 contour, extended MTU ss .9" @ 28"- ss	F28/B29"	8T	\$ 555.00	
26		308	M24 contour, extended MTU ss .9" @ 28"- ss 5R	F28/B29"	8T	\$ 585.00	
27		308	M24 contour, ss .9" @ 26"- ss	F26/B27	1-10t	\$ 535.00	
28		308	M24 contour, ss .9" @ 26"- ss - 5R	F26/B27	1-10t	\$ 585.00	
29		308	M24 contour, ss .9" @ 26"- ss	F26/B27	1-11.25t	\$ 535.00	
30		308	M24 contour, ss .9" @ 26"- ss - 5R	F26/B27	1-11.25t	\$ 570.00	
31	SALE	308	M24 contour, ss .9" @ 26"- ss - Reg \$575	F26/B27	1-12t	\$ 510.00	
32		308	M24 contour, ss .9" @ 26"- ss - 5R	F28/B29"	1-8t	\$ 585.00	
33		308	M24 contour, ss .9" @ 26"- ss - 5R	F26/B27	1-8t	\$ 585.00	
34		308	M24/M40 Contour - 5R rifling, Rock Creek Cut rifled	F26/27	1-11.25t	\$ 595.00	
35a		308	M24/M40 Contour - 5R rifling, Rock Creek Cut rifled	F26/27	8t	\$ 595.00	
35b		308	M24/M40 Contour - 5R rifling, Rock Creek Cut rifled	F28/29	8t	\$ 595.00	
36		308	#14 HEAVY Palma contour, SS, finish .90" dia	F30/B31"	1-13t	\$ 580.00	
37		308	#14 HEAVY Palma contour, 5R RIFLING , SS, finish .90" dia	F30/B31"	11.25T	\$ 595.00	
38		308	#14 HEAVY Palma contour, 5R RIFLING , SS, finish .90" dia	F30/B31"	11T	\$ 595.00	
39	SALE	308	#15 Palma contour, SS, 0.820" dia @ finish 30" - Reg. 555	F30/B31"	1-12t	\$ 520.00	
40		308	#15 Med Palma contour, 5R RIFLING , SS, finish .820" dia	F30/B31"	11T	\$ 620.00	
41	SALE	308	#16 Palma contour, SS, 0.750" dia @ finish 30" Reg. \$585	F30/B31"	1-12t	\$ 520.00	
42		308	Rem. Varmint - sendero , SS, 28" finish, .830 dia	F28/B29"	1-9t	\$ 555.00	

ITEM - select this one	Ref.	Caliber	Contour (material - stainless steel unless noted otherwise)	Length	Twist	Price	
43		308	Sendero - 1.25"dia x 2.5", finish .875" dia @ 26/27", 5R rifling Rock Creek cut rifled.	F26/27	9.25t	\$ 585.00	
44		308	Rem. Varmint, SS, 28" finish, .830 dia	F28/B29"	1-10t	\$ 555.00	
45		308	Rem. Varmint, SS, 28" finish, .830 dia	F28/B29"	1-11.25t	\$ 555.00	
46		308	Rem. Varmint, SS, 28" finish, .830 dia	F26/B27"	1-11.25t	\$ 555.00	
47		308	Rem. Varmint, SS, 26" finish, .830 dia	F26/B27	1-10t	\$ 555.00	
48		308	Rem. Varmint, SS, 26" finish, .830 dia	F26/B27	1-8t	\$ 535.00	
49		308	Rem. Varmint, SS, 26" finish, .830 dia, Reg \$555	F26/B27	1-12t	\$ 515.00	
50		308	#8 Contour, ss, .820" @ 26" finish	F26/27	1-10t	\$ 555.00	
51		308	#8 Contour, ss, .820" @ 26" finish	F26/27	11.25t	\$ 555.00	
52		308	#6 heavy sporter contour, sporter, .75" dia muz. SS, (finish 2" longer)	F28/B29"	1-10t	\$ 555.00	
53		308	#6 heavy sporter contour, sporter, .75" dia muz. SS	F26/B27"	1-10t	\$ 555.00	
54		308	#5 sporter contour, sporter, .70" dia muz. SS, 2" longer	F28/B29"	1-11.25t	\$ 555.00	
55		308	#5 sporter, special length, SS, 28" finish, .70 dia, 2" longer	F28/B29"	1-10t	\$ 555.00	
56		308	#5 sporter, special length, SS, 28" finish, .70 dia, 2" longer 5R Rifling	F28/B29"	1-10t	\$ 555.00	
57		308	#5 sporter, SS, 26" finish, .70 dia	F26/B27	1-10t	\$ 555.00	~4lb 1oz
58		308	Sporter .690" dia at muz. 23" FLUTED	F23/24	1-10t	\$ 720.00	
59		308	30cal 10t Krieger contour #4 (1.25 for 2.75"), SS, 5R heavy sporter finish 26" (.670" dia) - ROCK CREEK - cut rifled	F26/27	10T	\$ 585.00	
60		308	30cal 9.5t Krieger contour #4 (1.25 for 2.75"), SS, 5R heavy sporter finish 26" (.670" dia) - ROCK CREEK - cut rifled	F26/27	9.5T	\$ 585.00	
61		308	#4 sporter, match cro moly , 26" finish, .670 dia	F26/B27	1-10t	\$ 545.00	
62		308	#3 sporter, match cro moly , 26" finish , .630 dia	F24/B27	1-10t	\$ 545.00	

ITEM - select this one	Ref.	Caliber	Contour (material - stainless steel unless noted otherwise)	Length	Twist	Price	
63		308	#3 sporter, match cro moly , 26" finish , .630 dia	F24/B27	1-9t	\$ 545.00	
64		308	ROCK CREEK - cut rifled - ss, .650" dia @ 26" 1.2" dia @ breech	f26/27	11.27	\$ 585.00	
65		308	SPORTER 1.25"DIA. FOR 2.75", FINISH .75" DIA @ 25" - SS (modified #6 heavy sporter)	F25/B26	1-10t	\$ 545.00	

338

1		338	1.4" dia x 5, 1" dia @ 30" SS - for large action like Surgeon XL - rem. 700 1.35"	F30/B31"	1-9.35t	\$ 620.00	
2		338	1.4" dia x 5, 1" dia @ 30" SS - for large action like Surgeon XL - rem. 700 1.35"	F30/B31"	1-9.35t	\$ 620.00	
3		338	#17 special heavy, MTU - 1.25"x5", 1" dia @ 30" - SS	F30/B31"	1-9.35t	\$ 595.00	
4		338	#17 special heavy, MTU - 1.25"x5", 1" dia @ 30" - SS	F30/B31"	1-9.35t	\$ 595.00	
5		338	#17 special heavy, MTU - 1.25"x5", 1" dia @ 30", ss	F30/B31"	1-9.35t	\$ 595.00	
6		338	#17 special heavy, MTU - 1.25"x5", 1" dia @ 30" - blank 31" , ss	F30/B31"	1-9.35t	\$ 595.00	
7		338	#17 special heavy, MTU - 1.3"x5", .9" dia @ 28" - blank SPECIAL DIAMETER. ss 5R	F28/B29"	1-9.35	\$ 625.00	
8		338	#17 special heavy, MTU - 1.4"x5", 1" dia @ 31" - blank 32", SPECIAL DIAMETER, SPECIAL LENGTH ss	F31/B32	1-9.35t	\$ 610.00	
9		338	#17 Contour, 1.25x5" - .90"dia @ 28"	F28/29	1-10t	\$ 575.00	
10		338	MODIFIED #18 Contour, 1.25x5" - .90"dia @ 30" , 5R - cro moly	F30/31	1-9.35t	\$ 665.00	
11		338	#16 PALMA 1.25X2.5, .75M LIGHT, SS	F30/B31"	9.35	\$ 595.00	
12		338	Rem varmint (special - extra long) stretched out to 30" finish (.83" dia).. SS	F30/B31"	9.35	\$ 575.00	
13		338	Rem varmint (special long) - .83" dia @ 28" (.83" dia).. SS	F28/29	9.35	\$ 535.00	
14		338	Rem varmint (special long) - .83" dia @ 28" (.83" dia).. SS 5R rifling	F26/27	9.35	\$ 575.00	

ITEM - select this one	Ref.	Caliber	Contour (material - stainless steel unless noted otherwise)	Length	Twist	Price
15		338	SPT- 1.25X2.75, .75" M, #6 contour - modified length, SS	F28/29	9.35	\$ 535.00
16		338	#6 sporter, ss	F 26/27	9.35	\$ 525.00
16		338	#6 sporter, ss	F 26/27	10	\$ 525.00

375

							limited
1		375					call

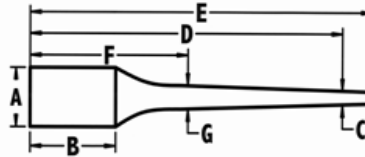
416

1		416					call
---	--	-----	--	--	--	--	------

Contour	A	B	C	D	Est wt.
M24/M40	1.2	3	0.9	26"	6.20#

#4.5 Sporter Contour - 1.250Dia x 2.750 long x.670 muzzle dia. Neck dia. (F) is .900 @ 6".

Sporter Barrel Contours^{1 & 4}



	A ³	B	C	D	E	F	G	Est. Weight
#0 Featherweight	1.250	1.250	.560	22	27	6	.760	2.0#
#1 Light Sporter	1.250	2.250	.560	24	27	6	.760	2.5#
#2 Standard Sporter	1.250	2.750	.600	24	27	6	.800	2.8#
#3 Medium Sporter	1.250	2.750	.630	24	27	6	.830	3.0#
#4 Heavy Sporter	1.250	2.750	.670	26	27	6	.870	3.5#
#5 Bull Sporter	1.250	2.750	.700	26	27	6	.900	4.0#
#6 Heavy Bull Sporter	1.250	2.750	.750	26	27	6	1.000	4.5#
Rem Varmint	1.250	2.200	.830	26	27	4.700	.960	4.5#

Varmint and Match Contours¹



	A ³	B	C	D	E	Est. Weight
#7 Light Target	1.200	2.750	.750	26	27	5.5#
#8 Standard Target	1.200	2.750	.820	26	27	6.0#
#9 Heavy Target	1.250	2.750	.875	26	27	6.5#
#10 MTU	1.250	2.750	.930	26	27	7.0#
#11 Straight Blank	CM 1.300/SS 1.250	--	CM 1.300/SS 1.250	28	29	10.0#
#12 SS Oversize OD	1.450	--	1.450	28	29	13.0#
#12 CM Oversize OD	2.000	--	2.000	28	29	23.0#
#13 50BMG	2.000	--	2.000	36	37	32.0#
#17 Heavy Varmint	1.250	5.000	.900	28	29	7.0#
#18 Light Varmint	1.200	5.000	.875	28	29	6.5#

ITEM - select this one	Ref.	Caliber	Contour (material - stainless steel unless noted otherwise)				Length	Twist	Price
#19 Hunter	1.250	4.000	.750	26	27	6.0#			
#20 Benchrest Short	1.200	4.500	.920	23	24	5.2#			
Palma Contours ^{1 & 2}									
	A ³	B	C	D	E	F	G	Est. Weight	
#14 Heavy Palma	1.250	2.500	.900	30	31	5	1.000	6.5#	
#15 Standard Palma	1.250	2.500	.820	30	31	5	0.920	5.5#	
#16 Light Palma	1.250	2.500	.750	30	31	5	0.900	4.5#	
¹ We can usually duplicate any factory contour a customer sends to us, or furnish a blank with contouring dimensions to your specifications, This has a <u>minimum</u> additional charge of \$25.00 over the base cost of a barrel ² Palma contours are available in calibers other than .30 and can be finished at lengths other than 30" which will change the cost of these barrels. Please call with questions. ³ These are our standard breech diameters for these contours. Upon request, you can choose to have this diameter altered. ⁴ Sporter contours smaller than a #3 will incur an additional \$20.00 charge due to their difficulty in finish turning The above contour numbers are exclusive to Krieger Barrels. The contour numbers of other barrel manufacturers do not necessarily correspond to our contour numbers.									
Page 2									