

**Barrel (Krieger / Rock Creek) Inventory - July 2017 -**  
**RPS International Inc - largest Krieger barrel inventory in Canada!** Special  
 orders please email - est. 3 months delivery

**\*\* Prices and inventory subject to change.**  
**Limited Sale - call to find out about other discounts**

ITEM -  
select this  
one

Ref.	Caliber	Contour (material - stainless steel unless noted otherwise)	Length	Twist	Price
------	---------	---	--------	-------	-------

**SEE CONTOUR / SIZING SPECS. at end  
of tables @ bottom**

**.17 cal**

In stock Lijja rem varmint 9t and Shilen select match 5.5 contour 1-9t - 3 groove - email us.

**20**

1		20	Rem Varmint 1-9t (special order twist), .830 @ 26" SS	F26/27"	9t	b/o
2		20	Rem Varmint 1-10t, .830 @ 26" SS	F26/27"	10t	b/o
3		20	#5 Contour 1-9t (special twist for heavier bullets) .70Dia" @ 28"	F28/29"	9t	\$ 550.00
4		20	HART 10t, .670" dia @26" Sporter - button barrel like Benchmark	F26/27"	10t	\$ 545.00

**224 CF**

1		224 -	#17 contour, SS, .9 dia @ 28"	F28/B29"	1-7.7t	b/o
2		224 -	#17 contour, SS, .9 dia @ 28"	F28/B29"	1-7t	\$ 550.00
3		224 -	#17 contour, SS, .9 dia @ 28"	F28/B29"	1-12t	b/o
4		224 -	#17 contour, SS, .9 dia @ 28"	F28/B29"	1-14t	\$ 550.00
5		224 -	#18 contour, SS .875 dia @ 28"	F28/B29"	1-14t	\$ 550.00
6		224 -	#18 contour, SS .875 dia @ 28"	F28/B29"	1-7.7t	\$ 550.00
7		224 -	#18 contour, SS .875 dia @ 28"	F28/B29"	1-7t	\$ 550.00
8		224 -	#16 palma contour, SS,	F28/B29"	1-7t	\$ 550.00
9		224 -	#16 palma contour, SS,	F30/B31"	1-8t	\$ 550.00
10		224 -	#16 palma contour, SS,	F28/B29"	1-12t	\$ 550.00
11		224 -	Rem. Varmint - .83" dia muz,	F28/B29"	1-8t	\$ 550.00
12		224 -	Rem. Varmint - .83" dia muz,	F26/B27"	1-8t	\$ 550.00
13		224 -	rem varmint - .830" dia muz	F26/B27"	1-9t	\$ 550.00
14		224 -	rem varmint - .830" dia muz	F28/B29"	1-9t	\$ 550.00
15		224 -	rem varmint - .830" dia muz	F26/B27"	1-10t	\$ 550.00
16		224 -	rem varmint - .830" dia muz 5R	F26/B27"	1-10t	\$ 595.00
17		224 -	rem varmint - .830" dia muz - non std twist 1-11t	F26/B27"	1-11t	\$ 575.00
18		224 -	rem varmint - .830" dia muz	F26/B27"	1-12t	\$ 550.00
19		224 -	Rem varmint contour, ss	F26/B27"	1-13t	sold out
20		224 -	Rem varmint contour, ss	F26/B27"	1-14t	\$ 550.00
21		224 -	#9 contour, SS MTU - straight taper, 1.25"dia beech x 2.75", .875dia muz	F26/B27"	1-12t	\$ 550.00
22		224 -	#8 contour .820" dia Muz	F26/B27"	1-8t	\$ 550.00
23		224 -	#7 contour, SS - straight taper, 1.2dia beech,x2.75", .75dia muz.	F26/B27"	1-8t	\$ 550.00
24		224 -	#7 contour, SS - straight taper, 1.2dia beech,x2.75", .75dia muz.	F26/B27"	1-12t	\$ 550.00
25		224	Shilen match #6 contour	F26/27"	14t	\$ 525.00
26		224 -	#5 Sporter contour, SS	F26/B27"	1-12t	\$ 550.00
27		224 -	#5 Sporter contour, SS	F26/B27"	1-10t	\$ 550.00
28		224	Shilen match #5 contour	F26/27"	9t	\$ 525.00

ITEM - select this one	Ref.	Caliber	Contour (material - stainless steel unless noted otherwise)	Length	Twist	Price
29		224 -	MTU (straight taper) - 1.2" X 2.75", .66" MUZZ @ 24" FINISH	24/25	1-9t	<b>sold out</b>
30		224 -	#4 sporter, .67" dia Muz	F26/B27"	1-8t	\$ 550.00
31		224 -	#4 sporter, .67" dia Muz	F26/B27"	1-14t	\$ 550.00
32		224 -	#3 sporter, .63" dia Muz	F24/B27"	1-8t	\$ 550.00

## 6mm

1		6 MM	Rock Creek Cut rifled 5R, ss 1.35" for 5" taper to 1.1" at 30"	F30/B31"	1-8t	\$ 675.00
2		6 MM	Hart, ss 1.35" for 5" taper to 1.1" at 30"	F30/B31"	1-8t	\$ 645.00
3		6 MM	#17 Special - SS, 1-8t, 1.25" for 5", taper to 1" @ 30"	F30/B31"	1-8t	\$ 575.00
4		6 MM	#17 Special - SS, 1-8t, 1.25" for 5", taper to 1" @ 30" - 5R rifling	F30/B31"	1-8t	\$ 595.00
5		6 MM	#17 Special length - SS, 1.25" for 5", taper to 0.9" @ 30"	F30/B31"	1-8t	\$ 575.00
6		6 MM	#17 Special length - SS, 1.25" for 5", taper to 0.9" @ 30" - 5R rifling.	F30/B31"	1-8t	\$ 595.00
7		6 MM	#17 Special length - SS, 1.25" for 5", taper to 0.9" @ 30"	F30/B31"	1-7t	\$ 595.00
8		6 MM	#17 Special length - SS, 1.25" for 5", taper to 0.9" @ 30" - 5R	F30/B31"	1-7.5t	\$ 635.00
9		6 MM	#17 mtu contour, SS, finish .9 dia. @ 28"	F28/B29"	1-14t	\$ 550.00
10		6 MM	mtu contour 1.2x5" - .9@26", SS, 27" blank"	F26/B27"	1-14t	\$ 550.00
11		6 MM	#17 mtu contour, SS, finish .9 dia. @ 28"	F28/B29"	1-13.5t	\$ 550.00
12		6 MM	#17 mtu contour, SS, finish .9 dia. @ 28" - 5R rifling	F28/B29"	1-13.5t	<b>sold out</b>
13		6 MM	#17 1.25" for 5, finish .9 dia. @ 28" - 5R rifling	F28/B29"	1-8t	\$ 595.00
14		6 MM	#17 special contour - SS - .9" dia. @28"	F28/B29"	1-8t	\$ 550.00
15		6MM	#17 mtu 1.25 for 5", .9 @28"	F28/B29"	1-7.5t	\$ 550.00
16		6MM	#17 mtu 1.25 for 5", .9 @28"	F28/B29"	1-7t	\$ 550.00
17		6 MM	#17 contour - SS, .9 muz- Special 5r rifling	F28/B29"	1-8t	\$ 575.00
18		6 MM	#18, .875 dia muz.	F28/B29"	1-14t	\$ 550.00
19		6 MM	#18, .875 dia muz.	F28/B29"	1-13.5t	\$ 550.00
20		6 MM	#18, .875 dia muz.	F28/B29"	1-8t	\$ 550.00
21		6 MM	Target contour MTU - 1.2" dia for 2.75", .855 dia muz. Regular \$450	F28/B29"	1-8t	\$ 550.00
22		6 MM	Target contour MTU - 1.2" dia for 2.75", .875 dia muz.	F28/B29"	1-8t	\$ 550.00
23		6 MM	Rem Varmint contour, SS, .830" @ 28"	F28/B29"	1-8t	\$ 565.00
24		6 MM	Rem.Varmint - special length and fluted - 10 flutes	F30/B31"	1-8t	<b>b/o</b>
25		6 MM	rem var mod, 1.25 for 2.2", .83" @ muz.	F28/B29"	1-7.5t	\$ 550.00
26		6 MM	rem var mod, 1.25 for 2.2", .83" @ muz. -5R	F28/B29"	1-7.5t	\$ 595.00
27		6 MM	rem var mod, 1.25 for 2.2", .83" @ muz. -5R	F28/B29"	1-7t	\$ 595.00
28		6 MM	#16 palma (light) contour, SS,	F28/B29"	1-8t	\$ 550.00
29		6 MM	#16 palma (light) contour, SS, special 5R rifling	F30/B31"	1-8t	\$ 595.00
30		6 MM	#16 palma (light) contour, SS,	F30/B31"	1-9t	\$ 550.00
31		6 MM	#15 Med palma contour, SS,	F30/B31"	1-8t	\$ 550.00
32		6 MM	#15 Med palma contour, SS, special 5R rifling	F30/B31"	1-8t	<b>sold out</b>
33		6 MM	#14 Heavy palma contour, SS, special 5R rifling	F30/B31"	1-8t	<b>sold out</b>

ITEM - select this one	Ref.	Caliber	Contour (material - stainless steel unless noted otherwise)	Length	Twist	Price
34		6MM	#6 Sporter contour, 1.25" dia.- 2.75", .75" dia @ muzzle (extended normally fin. 26")	F28/B29"	1-8t	\$ 550.00
35		6 MM	#5 contour, 1.25" for 2.75", .7 muzz.	F28/B29"	1-8t	\$ 550.00
36		6 MM	#5 contour, <b>5R RIFLING</b> , SS, 1.25" for 2.75", .7 muzz. @ 26"	F26/B27"	1-8t	\$ 575.00
37		6 MM	#4 sporter contour, <b>5R RIFLING</b> , SS, .670 dia. @ muz.	F26/B27"	1-8t	\$ 595.00
38		6 MM	#4 sporter contour, ss .670 dia muz.	F28/B29"	1-8t	\$ 550.00
39		6 MM	#4 contour - SS - .670" dia @ muzzle special twist	F26/B27"	1-7t	\$ 550.00
40		6 MM	#3 sporter contour, SS,	F24/B27"	1-10t	\$ 550.00
41		6 MM	#3, sporter .630 dia muz.	F24/B27"	1-8t	\$ 550.00
42		6 MM	Sporter, 1.25" dia for 2.25", .560" dia muzzle @ 26", - CRO MO	F26/27"	1-8t	\$ 550.00
<b>We have light contours from Hart and Shilen in stock - call or email.</b>						

## 6.5 mm

1		6.5 MM	#17A MTU, 1.25"for 5", FIN 30", .9 MUZ. CROWN - 5R rifling weight ~3575 gms	F30/F31	1-8T	\$ 595.00
2		6.5 MM	#17A MTU, 1.25"for 5", FIN 30", .9 MUZ. CROWN	F30/F31	1-8T	\$ 595.00
3		6.5 MM	#17B MTU, 1.25"for 5", FIN 30", 1 MUZ. CROWN - 5R rifling weight ~3875 gms	F30/F31	1-8T	\$ 595.00
4		6.5 MM	#17B MTU, 1.25"for 5", FIN 30", 1 MUZ. CROWN	F30/F31	1-8T	\$ 575.00
5		6.5 MM	#17B MTU, 1.25"for 5", FIN 30", 1 MUZ. CROWN <b>5R rifling</b>	f28/29	1-8T	\$ 595.00
6		6.5 MM	#17 MTU, 1-8T, FIN 28", .9 MUZ. CROWN	F28/B29"	1-8T	\$ 555.00
7		6.5 MM	#18 MTU, 1-8T, FIN 30", .875 MUZ. CROWN	F30/B31"	1-8T	\$ 555.00
8		6.5 MM	#18 MTU, 1-8T, FIN 30", .875 MUZ. CROWN	F30/B31"	1-8T	\$ 555.00
9		6.5 MM	#18 target contour, .875@ muzz @ 28" SS,	F28/B29"	1-8.5t	\$ 555.00
10		6.5 MM	#18 target contour, .875@ muzz @ 28" SS,	F28/B29"	1-8t	\$ 555.00
11		6.5 MM	#18 target contour, .875@ muzz @ 28" SS, <b>5R rifling</b>	F28/B29"	1-8t	\$ 595.00
12		6.5 MM	#16 palma light contour (good long range hunting contour), .75" @ 30", SS,	F30/B31"	1-8t	\$ 555.00
13		6.5 MM	#14 palma contour (good long range hunting contour), .9" @ 30", SS, <b>5R rifling</b>	F30/B31"	1-8t	\$ 595.00
14		6.5 MM	#15 palma med .820" muz. @ 30", SS,	F30/B31"	1-8t	B/O
ROCK CREEK 15		6.5mm	<b>Rock Creek Brand</b> , ss, cut rifled, M24/M40 Contour - <b>5R rifling</b> ,	F26/27	1-8t	\$ 595.00
15b		6.5mm	<b>Krieger Brand</b> , ss, cut rifled, M24/M40 Contour - <b>5R rifling</b> , <b>fluted 10 flutes</b>	F26/27	1-8t	call
16		6.5mm	<b>Rock Creek Brand</b> , ss, cut rifled, Rem. Varmint Contour - <b>5R rifling</b> ,	F26/27	1-8t	\$ 595.00
17		6.5mm	<b>Hart</b> , ss, Rem. Varmint Contour	F26/27	8t	\$ 550.00
18		6.5MM	Rem Varmint contour, long, ss	F28/B29"	1-8t	\$ 550.00
19		6.5MM	Rem Varmint contour, long, ss	F28/B29"	1-8.5t	\$ 550.00

ITEM - select this one	Ref.	Caliber	Contour (material - stainless steel unless noted otherwise)	Length	Twist	Price	
20		6.5MM	Rem Varmint contour, long, ss	F28/B29"	1-8.25t	\$ 550.00	
21		6.5MM	Rem Varmint contour, long, ss	F28/B29"	1-9t	555 - sale \$445	
22		6.5MM	#10 mtu contour, ss,	F26/B27"	1-8t	\$ 550.00	
23		6.5 MM	#9 mtu contour, SS,	F26/B27"	1-8t	sold out	
24		6.5 MM	#8 mtu contour, SS,	F26/B27"	1-8t	sold out	
25		6.5 MM	#7 CONTOUR, FIN. 26", .75" DIA MUZ., ss	F26/B27"	1-8T	sold out	
26		6.5 MM	#6 CONTOUR, FIN. 26" , .75" DIA MUZ., ss	F26/B27"	1-8T	sold out	
27		6.5 MM	#5 Sporter, 5R RIFLING, Fin. .70" dia. @ 28", ss,	F28/B29"	8t	\$ 595.00	
28		6.5 MM	#5 Sporter, Fin. .70" dia. @ 28", ss, extended length	F28/B29"	8t	\$ 550.00	
29		6.5 MM	#5 Sporter, Fin. .70" dia. @ 28", ss,	F28/B29"	8.5t	\$ 550.00	
30		6.5 MM	#5 Sporter, Fin. .70" dia. @ 28", ss,	F28/B29"	9t	555 - sale \$445	
31		6.5 MM	#4.5 sporter, Fin. .67" Dia. @ 26", SS	F26/B27"	1-8t	\$ 550.00	
32		6.5 MM	#4.5 sporter, Fin. .67" Dia. @ 26", SS	F26/B27"	1-8.5t	\$ 550.00	
33		6.5 MM	#4.5 sporter, Fin. .67" Dia. @ 26", SS	F26/B27"	1-9t	555 - sale \$445	
34		6.5mm	#4 Krieger contour (1.25dia for 2.75", finish .670 @ 26") - ROCK Creek 5R rifling	F26/27"	8t	\$585	
35		6.5mm	#4 ROCK Cr. contour (1.20 dia for 3", finish .650 @ 26") - ROCK Creek 5R rifling	F26/27"	8t	\$585	
36		6.5 MM	#4 sporter, match SS, Fin .670 dia @ 26",	F26/B27"	1-8t	\$ 550.00	
		6.5 MM	#4 sporter, match SS, Fin .670 dia @ 26", 5R Rifling	F26/B27"	1-8t	\$ 595.00	
37		6.5 MM	#4 sporter, match SS, Fin .670 dia @ 26",	F26/B27"	8.5t	\$ 550.00	
38		6.5 MM	#4 sporter, match SS, Fin .670 dia @ 26",	F26/B27"	1-9t	555 - sale \$445	
39		6.5 MM	#4 sporter, match cro moly, .670 dia	F26/B27"	1-8t	b/o	
40		6.5 MM	#3 sporter, match cro moly, .630 dia	F24/B27"	1-8t	b/o	
HART 41		6.5 MM	HART #3 sporter, match STAINLESS, .630 dia	F26/B27"	1-8t	\$ 550.00	
HART 42		6.5 MM	HART #3 sporter FLUTED, match STAINLESS, .630 dia	F26/B27"	1-8t	\$ 695.00	
HART 43		6.5 MM	HART #2 sporter, match STAINLESS, .630 dia	F26/B27"	1-8t	\$ 550.00	
44		6.5 MM	sporter, 1.17" DIA X 2.75", .83" DIA @ 26", SS	F26/B27"	1-9t	\$ 550.00	

## 7 mm

		call or email for sale prices on random barrels					limited
1		7 MM	Rock Creek cut rifled. 5R, ss 1.35" for 5" taper to 1.1" at 30"	F30/B31"	1-8t	\$ 675.00	
2		7 MM	Hart, ss 1.35" for 5" taper to 1.1" at 30"	F30/B31"	1-8t	\$ 645.00	
3		7 MM	1.25 for 32", SPECIAL LENGTH	F32/B33"	1-8t	\$ 670.00	
4		7 MM	1.25 for 32", SPECIAL LENGTH	F32/B33"	1-9t	\$ 670.00	
5		7 MM	#17 Mtu, 1.25 for 5", 0.9@ muz - SPECIAL LENGTH	F31/B32"	1-8t	b/o	
6		7 MM	#17 Mtu, 1.25 for 5", 0.9@ muz - SPECIAL LENGTH	F31/B32"	1-8.5t	b/o	
7		7 MM	#17 Mtu special 5R, 1.25 for 5", 0.9@ muz	F30/B31"	1-8.5t	b/o	

	ITEM - select this one	Ref.	Caliber	Contour (material - stainless steel unless noted otherwise)	Length	Twist	Price	
	8		7 MM	#17 Mtu special 5R, 1.25 for 5", 0.9@ muz	F30/B31"	1-8t	b/o	
	9		7 MM	#17 Mtu, 1.25 for 5", 0.9@ muz - SPECIAL LENGTH	F30/B31"	1-8t	\$ 550.00	
	10		7 MM	#17 Mtu, 1.25 for 5", 0.9@ muz - SPECIAL LENGTH ss	F30/B31"	1-8.5t	b/o	
	11		7 MM	#17 special contour MTU - 1-8.5t, FIN 30", 1" DIA MUZ., ss	F30/B31"	1-8.5T	\$ 550.00	~8lb - 7oz @ 31+ "
	12		7 MM	#17 Mtu, 1.25 for 5", 0.9@ muz., ss	F30/B31"	1-9t	b/o	
	13		7 MM	#17 Mtu, 1.25 for 5", 0.9@ muz., ss	F28/B29"	1-8.5t	\$ 550.00	
	14		7 MM	#17 Mtu, 1.25 for 5", 0.9@ muz., ss	F28/B29"	1-8t	\$ 550.00	
	15		7 MM	Targer contour, 1.25" for 2.75" (breech) taper to 0.930" @28"	F28/B29"	8.5t	b/o	
	16		7 MM	Bartlein - 5r - 1.25" for 5" straight taper to 1" @ 30	F30/31	1-9t	bo	
	17		7 MM	#18 Mtu special 5R, 1.2 for 5", 0.875@ muz. Ss	F30/B31"	1-8.5t	b/o	
	18		7 MM	#18 Mtu special length, 1.2 for 5", 0.875@ muz. Ss	F30/B31"	1-8t	b/o	
	19		7 MM	#18 Mtu special length, 1.2 for 5", 0.875@ muz, ss	F30/B31"	1-8.5t	b/o	
	20		7 MM	#18 Mtu special length, 1.2 for 5", 0.875@ muz., ss	F30/B31"	1-8.75t	\$ 550.00	
	21		7 MM	#18 contour, 1.2 for 5" , .875 muz., ss	F28/B29"	1-8.5t	\$ 550.00	
	22		7 MM	#18 contour, 1.2 for 5" , .875 muz., ss	F28/B29"	1-8t	b/o	
	23		7 MM	#16 light palma, 1.25for 2.5, .75@muz., ss	F30/B31"	1-8t	\$ 550.00	
	24		7 MM	#16 palma light contour, SS,	F30/B31"	1-8.5t	\$ 550.00	
	25		7 MM	#16 palma light contour, SS,	F30/B31"	1-9t	\$ 550.00	
	26		7 MM	Rem Varmint contour special length, SS, SPECIAL 5R rifling 28" finish, .830 dia	F28/B29"	1-8t	\$ 550.00	
	27		7 MM	Rem Varmint contour special length, SS .830 dia	F28/B29"	1-8t	b/o	
	28		7MM	REM VAR. SPORTER - SPECIAL LENGTH ,ss	F28/B29"	1-8.5t	\$ 550.00	
	29		7MM	REM VAR. SPORTER - SPECIAL LENGTH , ss	F28/B29"	1-8.75t	\$ 550.00	
	30		7MM	REM VAR. SPORTER - , ss	F26/B27"	1-8.5t	\$ 550.00	
	31		7MM	REM VAR. SPORTER - , ss	F26/B27"	1-8t	\$ 550.00	
	32		7 MM	Rem Varmint contour, SPECIAL LENGTH, SS,	F28/B29"	1-9t	\$ 550.00	
	33		7 MM	Rem Varmint contour special length, SS, SPECIAL 5R rifling 28" finish, .830 dia	F28/B29"	1-9t	\$ 575.00	
	34		7MM	REM VAR. SPORTER - 1.25X2.2, .83DIA @ 26" , ss	F26/B27"	1-9T	\$ 550.00	
	35		7 MM	#7 CONTOUR - 1-9T, 26" FIN. .75 DIA MUZ., ss	F26/B27"	1-9T	b/o	
	36		7 MM	#6 Heavy bull sporter, .75M., ss	F26/B27"	1-8t	b/o	
	37		7 MM	#6 Heavy bull sporter, .75M., ss - 2" longer	F28/B29"	1-8.75t	b/o	
	38		7 MM	#6 CONTOUR, 26" FIN. .75 DIA MUZ., ss	F26/B27"	1-9T	\$ 550.00	
	39		7 MM	#5 CONTOUR, 26" FIN. .7 DIA MUZ., ss	F26/B27"	1-8T	b/o	
	40		7 MM	#5 CONTOUR, 26" FIN. .7 DIA MUZ., ss	F26/B27"	1-8.5T	\$ 550.00	
	41		7 MM	#5 CONTOUR, 26" FIN. .7 DIA MUZ., ss	F26/B27"	1-9T	\$ 550.00	
	42		7 MM	#5 CONTOUR, FIN. .7 DIA @ 28" MUZ., ss - 2" longer	F28/B29"	8t	\$ 550.00	
	43		7 MM	#5 CONTOUR, FIN. .7 DIA @ 28" MUZ., ss - 2" longer	F28/B29"	8.5t	\$ 550.00	



ITEM - select this one	Ref.	Caliber	Contour (material - stainless steel unless noted otherwise)	Length	Twist	Price	
44		7 MM	#5 CONTOUR, FIN. .7 DIA @ 28" MUZ., ss - 2" longer	F28/B29"	9t	b/o	
45		7 MM	#4.5 sporter, SS, .670" dia @ 28" finish (2" longer finish)	F28/B29"	1-8t	\$ 550.00	
46		7 MM	#4.5 sporter, 5R RIFLING, SS, .670" dia @ 28" finish (2" longer finish)	F28/B29"	8T	\$ 595.00	
47		7 MM	#4.5 sporter, SS, .670" dia @ 28" finish (2" longer finish)	F28/B29"	1-8.5t	\$ 550.00	
48		7 MM	#4.5 sporter, 5R RIFLING, SS, .670" dia @ 28" finish (2" longer finish)	F28/B29"	8.5T	b/o	
49		7 MM	#4.5 sporter, SS, .670" dia @ 28" finish (2" longer finish)	F28/B29"	8.75t	\$ 550.00	
50		7 MM	#4.5 sporter, 5R RIFLING, SS, .670" dia @ 28" finish (2" longer finish)	F28/B29"	9T	\$ 595.00	
51		7 MM	#4.5 sporter, SS 1-8t, 26" finish, .670 dia	F26/B27"	1-8t	\$ 550.00	
52		7 MM	#4.5 sporter, SS 1-8.5t, 26" finish, .670 dia	F26/B27"	1-8.5t	\$ 550.00	
53		7 MM	#4.5 sporter, SS, 1-9t, 26" finish, .670 dia - extended length	F28/B29"	1-9t	\$ 550.00	
54		7 MM	#4.5 sporter, SS, 1-9t, 26" finish, .670 dia	F26/B27"	1-9t	\$ 550.00	
55		7MM	#4 sporter, SS, 1-8.3t, 26" finish, .670 dia, 5R rifling, Rock Creek cut rifled.	F26/27"	8.3T	\$ 585.00	
if you need lighter controls call us about Hart and Shilen Select match stainless #3 and #2 contours							
56		7 MM	#4 sporter, match cro moly, 26" finish, .670 dia	F26/B27"	1-8.5t	\$ 555.00	
57		7 MM	#4 sporter, match cro moly, 26" finish, .670 dia	F26/B27"	1-9t	\$ 585.00	
58		7 MM	#3 sporter, match cro moly, 26" finish, .630 dia	F26/B27"	1-9t	\$ 585.00	
59		7 MM	#2 sporter, match cro moly, 26" finish, .600 dia	F26/B27"	1-9t	\$ 585.00	
We have light contours from Hart and Shilen in stock - call or email.							

### 308

							limited
1		308	#17 special length/contour, 30" FIN., 1" DIA @ MUZ.	F30/B31"	1-10t	b/o	
2		308	#17 special length/contour, 30" FIN., 1" DIA @ MUZ., SS, SPECIAL 5R RIFLING,	F30/B31"	1-10t	b/o	
3		308	#17 special length/contour, 30" FIN., 1" DIA @ MUZ.	F30/B31"	1-12t	\$ 575.00	
4		308	#17 special length/contour, 30" FIN., 1" DIA @ MUZ., SS, SPECIAL 5R RIFLING,	F30/B31"	1-12t	\$ 605.00	
5		308	#17 special length/contour, 30" FIN., 1" DIA @ MUZ., SS, SPECIAL	F30/B31"	1-11.25t	\$ 585.00	
6		308	#17 special contour, 1" DIA @ MUZ. 28", SS, SPECIAL	F28/B29"	1-11.25t	\$ 555.00	
7		308	#17 special contour, 1" DIA @ MUZ. 28", SS, SPECIAL 5R RIFLING,	F28/B29"	1-10t	\$ 590.00	
8		308	#17 CONT., 28" FIN., .9" @ MUZ., SS	F28/B29"	1-11.25t	b/o	
9		308	#17 CONT., 28" FIN., .9" @ MUZ., SPECIAL 5R RIFLING, SS	F28/B29"	11.25T	\$ 590.00	
10		308	#17 CONT., 28" FIN., .9" @ MUZ. SS	F28/B29"	10T	\$ 555.00	
11		308	#17 CONT., 28" FIN., .9" @ MUZ., SPECIAL 5R RIFLING, SS	F28/B29"	10T	b/o	

ITEM - select this one	Ref.	Caliber	Contour (material - stainless steel unless noted otherwise)	Length	Twist	Price	
12		308	#18 CONT., 28" 0.875" @ MUZ., ss	F30/B31"	1-11.25t	\$ 555.00	
13		308	#18 CONT., 28" 0.875" @ MUZ., ss <b>SPECIAL 5R RIFLING,</b>	F28/B29"	1-11.25t	b/o	
14		308	M24 contour, ss .9" @ 26"- ss	F26/B27	1-10t	b/o	
15		308	M24 contour, ss .9" @ 26"- ss	F26/B27	1-11.25t	\$ 570.00	
16		308	M24 contour, ss .9" @ 26"- ss	F26/B27	1-12t	\$ 570.00	
17		308	M24/M40 Contour - 5R rifling, <b>Rock Creek Cut rifled</b>	F26/27	1-11.25t	\$ 595.00	
18		308	M24/M40 Contour - 5R rifling, <b>Bartlein Cut rifled</b>	F26/27	1-11.25t	\$ 595.00	
19		308	#14 HEAVY Palma contour, SS, finish .90" dia	F30/B31"	1-13t	\$ 580.00	
20		308	#14 HEAVY Palma contour, <b>5R RIFLING</b> , SS, finish .90" dia	F30/B31"	11.25T	\$ 595.00	
21		308	#14 HEAVY Palma contour, <b>5R RIFLING</b> , SS, finish .90" dia	F30/B31"	11T	b/o	
22		308	#15 Palma contour, SS, 0.820" dia @ finish 30"	F30/B31"	1-12t	\$ 555.00	
23		308	#15 Med Palma contour, <b>5R RIFLING</b> , SS, finish .820" dia	F30/B31"	11T	b/o	
24		308	#16 Palma contour, SS, 0.750" dia @ finish 30"	F30/B31"	1-12t	b/o	
25		308	Sendero - 1.25"dia x 2.5", finish .875" dia @ 26/27", 5R rifling <b>Rock Creek cut rifled.</b>	F26/27	9.25t	\$ 585.00	
26		308	Rem. Varmint, SS, 28" finish, .830 dia	F28/B29"	1-10t	\$ 555.00	
27		308	Rem. Varmint, SS, 28" finish, .830 dia	F28/B29"	1-11.25t	\$ 555.00	
28		308	Rem. Varmint, SS, 28" finish, .830 dia	F26/B27"	1-11.25t	\$ 555.00	
29		308	Rem. Varmint, SS, 26" finish, .830 dia	F26/B27	1-10t	\$ 555.00	
30		308	Rem. Varmint, SS, 26" finish, .830 dia, <b>FLUTED</b>	F26/B27	1-10t	b/o	
31		308	Rem. Varmint, SS, 26" finish, .830 dia,	F26/B27	1-12t	\$ 555.00	
32		308	#8 Contour, ss, .820" @ 26" finish	F26/27	1-10t	\$ 555.00	
33		308	#8 Contour, ss, .820" @ 26" finish	F26/27	11.25t	b/o	
34		308	#6 heavy sporter contour, sporter, .75" dia muz. SS, (finish 2" longer)	F28/B29"	1-10t	b/o	
35		308	#6 heavy sporter contour, sporter, .75" dia muz. SS	F26/B27"	1-10t	b/o	
36		308	#5 sporter contour, sporter, .70" dia muz. SS, 2" longer	F28/B29"	1-11.25t	\$ 555.00	
37		308	#5 sporter, special length, SS, 28" finish, .70 dia, 2" longer	F28/B29"	1-10t	\$ 555.00	
38		308	#5 sporter, special length, SS, 28" finish, .70 dia, 2" longer <b>5R Rifling</b>	F28/B29"	1-10t	\$ 555.00	
39		308	#5 sporter, SS, 26" finish, .70 dia	F26/B27	1-10t	\$ 555.00	~4lb 1oz
40		308	Sporter .690" dia at muz. 23" <b>FLUTED</b>	F23/24	1-10t	\$ 720.00	
41		308	30cal 10t Krieger contour #4 (1.25 for 2.75"), SS, 5R heavy sporter finish 26" (.670" dia) - <b>ROCK CREEK - cut rifled</b>	F26/27	10T	\$ 585.00	
42		308	30cal 9.5t Krieger contour #4 (1.25 for 2.75"), SS, 5R heavy sporter finish 26" (.670" dia) - <b>ROCK CREEK - cut rifled</b>	F26/27	9.5T	\$ 585.00	

ITEM - select this one	Ref.	Caliber	Contour (material - stainless steel unless noted otherwise)	Length	Twist	Price	
43		308	#4 sporter, match <b>cro moly</b> , 26" finish, .670 dia	F26/B27	1-10t	\$ 545.00	
44		308	#3 sporter, match <b>cro moly</b> , 26" finish, .630 dia	F24/B27	1-10t	\$ 545.00	
45		308	#3 sporter, match <b>cro moly</b> , 26" finish, .630 dia	F24/B27	1-9t	\$ 545.00	
46		308	<b>ROCK CREEK - cut rifled</b> - ss, .650" dia @ 26" 1.2" dia @ breech	f26/27	11.27	\$ 585.00	
47		308	SPORTER 1.25"DIA. FOR 2.75", FINISH .75" DIA @ 25" - SS (modified #6 heavy sporter)	F25/B26	1-10t	\$ 545.00	

### 338

1		338	1.4" dia x 5, 1" dia @ 30" SS - for large action like Surgeon XL - rem. 700 1.35"	F30/B31"	1-9.35t	b/o	
2		338	1.4" dia x 5, 1" dia @ 30" SS - for large action like Surgeon XL - rem. 700 1.35"	F30/B31"	1-9.35t	b/o	
3		338	#17 special heavy, MTU - 1.25"x5", 1" dia @ 30" - SS	F30/B31"	1-9.35t	b/o	
4		338	#17 special heavy, MTU - 1.25"x5", 1" dia @ 30" - SS	F30/B31"	1-9.35t	b/o	
5		338	#17 special heavy, MTU - 1.25"x5", 1" dia @ 30", ss	F30/B31"	1-9.35t	b/o	
6		338	#17 special heavy, MTU - 1.25"x5", 1" dia @ 30" - blank 31", ss	F30/B31"	1-9.35t	b/o	
7		338	#17 special heavy, MTU - 1.35"x5", 1" dia @ 30" - blank 31", SPECIAL DIAMETER, SPECIAL LENGTH, ss - - rem. 700 1.35"	F30/B31"	1-9.35	b/o	
8		338	#17 special heavy, MTU - 1.4"x5", 1" dia @ 31" - blank 32", SPECIAL DIAMETER, SPECIAL LENGTH, ss	F31/B32	1-9.35t	b/o	
9		338	#17 Contour, 1.25x5" - .90"dia @ 28"	F28/29	1-10t	b/o	
10		338	#16 PALMA 1.25X2.5, .75M LIGHT, SS	F30/B31"	9.35	b/o	
11		338	Rem varmint (special - extra long) stretched out to 30" finish (.83" dia), SS	F30/B31"	9.35	\$ 575.00	
12		338	Rem varmint (special long) - .83" dia @ 28" (.83" dia), SS	F28/29	9.35	\$ 575.00	
13		338	Rem varmint (special long) - .83" dia @ 28" (.83" dia), SS <b>5R rifling</b>	F26/27	9.35	\$ 595.00	
14		338	SPT- 1.25X2.75, .75" M, #6 contour - modified length, SS	F28/29	9.35	\$ 555.00	
15		338	#6 sporter, ss	F 26/27	9.35	\$ 555.00	
16		338	SPT- 1.25X2.75, .70" M #5 cont. - modified length, SS	F28/29	9.35	\$ 555.00	

### 375

							limited
1		375					

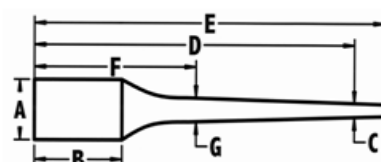
### 416

1		416					
---	--	-----	--	--	--	--	--



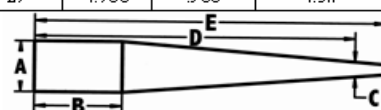
ITEM - select this one	Ref.	Caliber	Contour (material - stainless steel unless noted otherwise)	Length	Twist	Price
Special	Contour A	B	C	D	Est wt.	
	M24/M40	1.2	3	0.9	26"	6.20#

**Sporter Barrel Contours<sup>1&4</sup>**



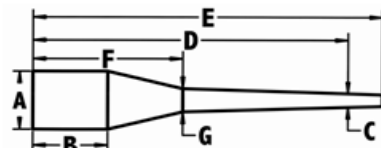
	A <sup>3</sup>	B	C	D	E	F	G	Est. Weight
#0 Featherweight	1.250	1.250	.560	22	27	6	.760	2.0#
#1 Light Sporter	1.250	2.250	.560	24	27	6	.760	2.5#
#2 Standard Sporter	1.250	2.750	.600	24	27	6	.800	2.8#
#3 Medium Sporter	1.250	2.750	.630	24	27	6	.830	3.0#
#4 Heavy Sporter	1.250	2.750	.670	26	27	6	.870	3.5#
#5 Bull Sporter	1.250	2.750	.700	26	27	6	.900	4.0#
#6 Heavy Bull Sporter	1.250	2.750	.750	26	27	6	1.000	4.5#
Rem Varmint	1.250	2.200	.830	26	27	4.700	.960	4.5#

**Varmint and Match Contours<sup>1</sup>**



	A <sup>3</sup>	B	C	D	E	Est. Weight
#7 Light Target	1.200	2.750	.750	26	27	5.5#
#8 Standard Target	1.200	2.750	.820	26	27	6.0#
#9 Heavy Target	1.250	2.750	.875	26	27	6.5#
#10 MTU	1.250	2.750	.930	26	27	7.0#
#11 Straight Blank	CM 1.300/SS 1.250	--	CM 1.300/SS 1.250	28	29	10.0#
#12 SS Oversize OD	1.450	--	1.450	28	29	13.0#
#12 CM Oversize OD	2.000	--	2.000	28	29	23.0#
#13 50BMG	2.000	--	2.000	36	37	32.0#
#17 Heavy Varmint	1.250	5.000	.900	28	29	7.0#
#18 Light Varmint	1.200	5.000	.875	28	29	6.5#
#19 Hunter	1.250	4.000	.750	26	27	6.0#
#20 Benchrest Short	1.200	4.500	.920	23	24	5.2#

**Palma Contours<sup>1&2</sup>**



	A <sup>3</sup>	B	C	D	E	F	G	Est. Weight
#14 Heavy Palma	1.250	2.500	.900	30	31	5	1.000	6.5#
#15 Standard Palma	1.250	2.500	.820	30	31	5	0.920	5.5#
#16 Light Palma	1.250	2.500	.750	30	31	5	0.900	4.5#

<sup>1</sup>We can usually duplicate any factory contour a customer sends to us, or furnish a blank with contouring dimensions to your specifications. This has a minimum additional charge of \$25.00 over the base cost of a barrel

<sup>2</sup>Palma contours are available in calibers other than .30 and can be finished at lengths other than 30" which will change the cost of these barrels. Please call with questions.

<sup>3</sup>These are our standard breech diameters for these contours. Upon request, you can choose to have this diameter altered.

<sup>4</sup>Sporter contours smaller than a #3 will incur an additional \$20.00 charge due to their difficulty in finish turning

The above contour numbers are exclusive to Krieger Barrels. The contour numbers of other barrel manufacturers do not necessarily correspond to our contour numbers.